

PROXY PRO RAS ULTRA QUICK START GUIDE: GETTING STARTED

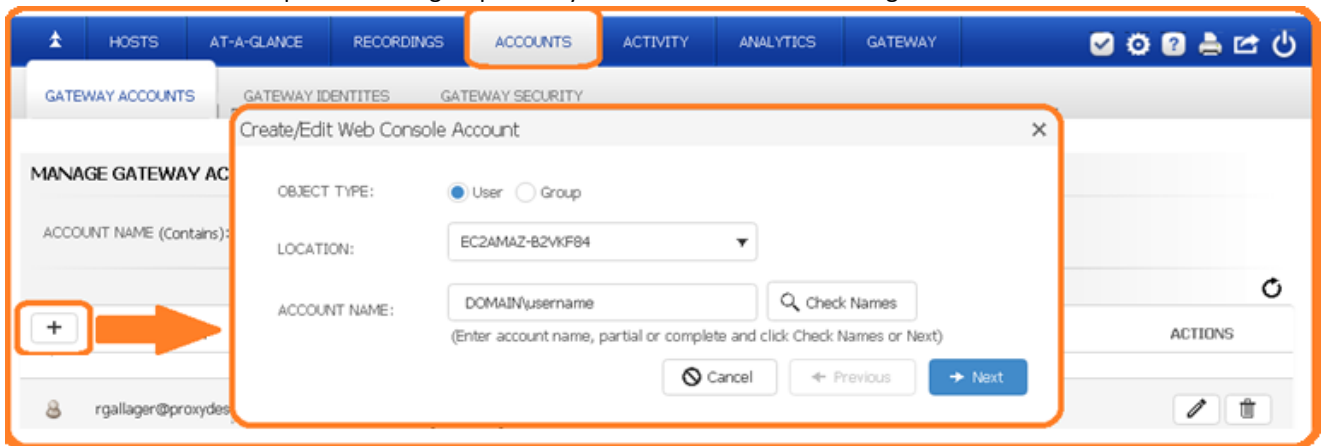
- Windows Server 2016 or 2019 (VM is perfect) with 2 CPU, 4 GB memory, 50gb HDD space
- Generate a DNS alias for the server and install a matching certificate (i.e. support.acme.com or a wildcard like *.yourwebsite.com)
- Port forward 443 to the server to use PROXY Pro RAS externally

DOWNLOADING AND INSTALLING PROXY PRO RAS

- 1) Download the PROXY Pro RAS Edition software zip file from within the v10 folder at products.proxynetworks.com and extract
- 2) From the Server Products extraction folder, install **PROXYProServerProducts.exe** to begin
- 3) The installer will download and install SQL Express by default; hit **Next** or specify an existing SQL Server instance then click **Next**.
 - a. Enter the web address that you want your PROXY Pro Web Console to be accessible at and click **Next**.
 - b. Equip the server with a certificate by choosing from a list of installed certificates and click **Next**.
 - c. The installer will ask you to create two service accounts (DOMAIN\RemoteControlGateway and DOMAIN\RemoteControlConsole). The installer will create accounts; supply a password for each and hit **Next** -> **Finish**.

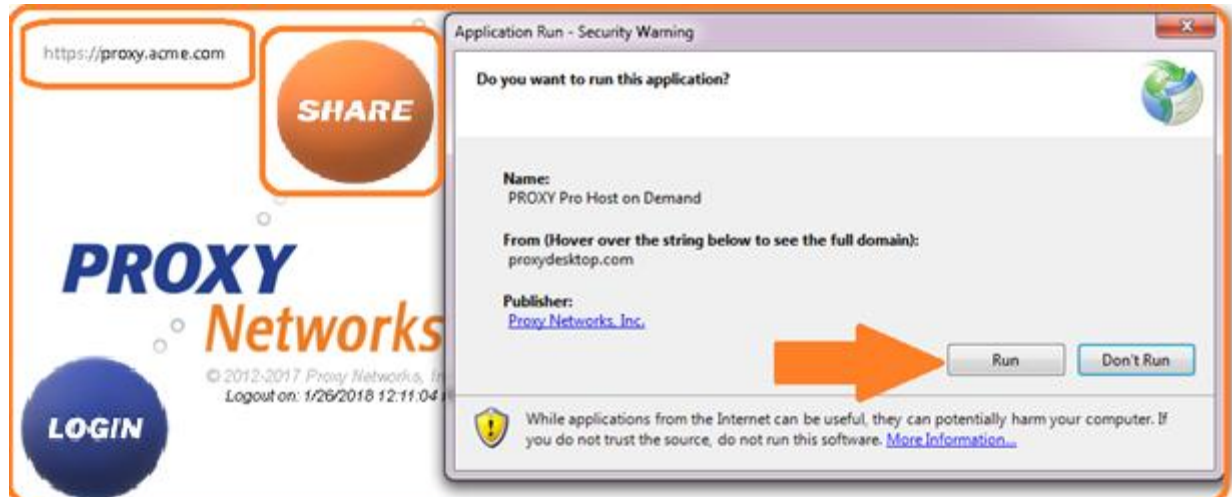
FIRST TIME LOGIN & ADDING TECHNICIANS

- 1) Visit your web console address using the one specified in step 3a, log in using the local administrator account
- 2) Use the “**Accounts**” tab to import users or groups from your domain who will be using PROXY Pro

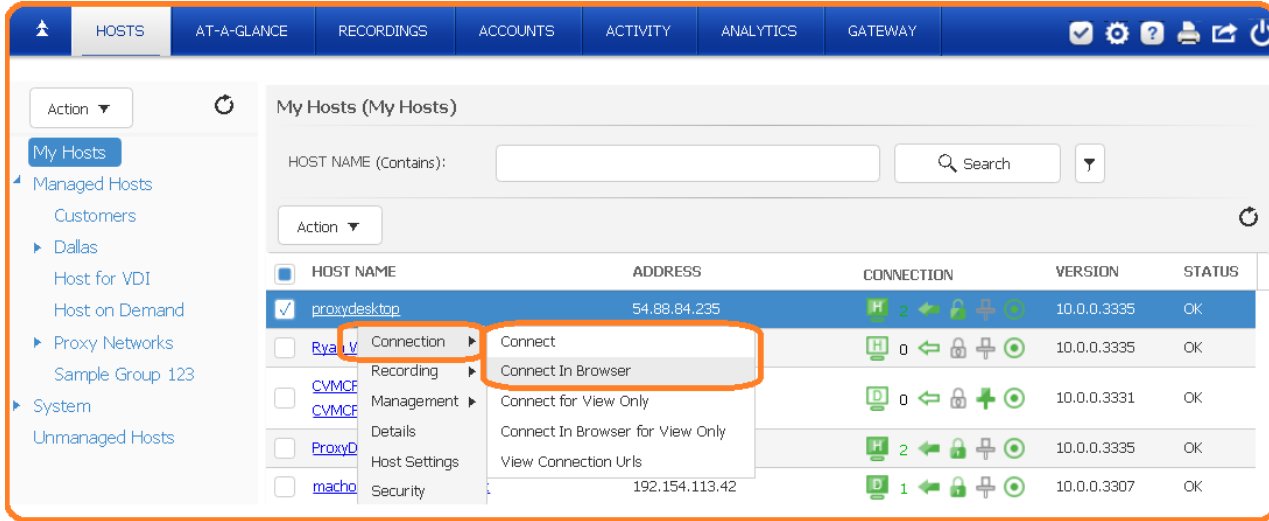


SHARING A DESKTOP & CONNECTING TO IT

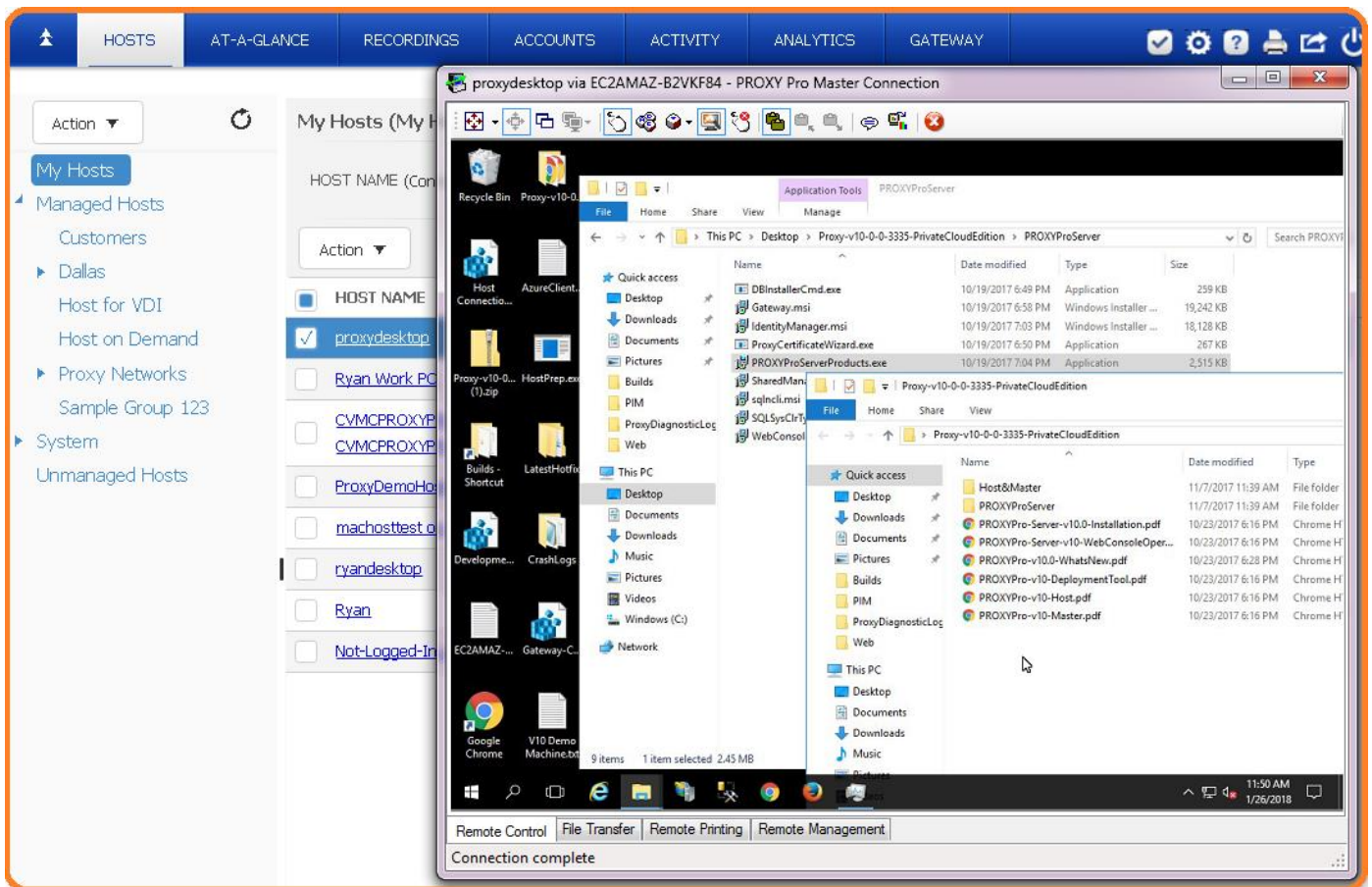
1. Launch the Host on Demand, click “SHARE” on the Proxy Web Console landing page



2. All endpoints are in “My Hosts”; endpoints running the Host on Demand instances are in the Host on Demand group



3. Click to connect!



Great! Now that the server-side software is installed, you can use the PROXY Pro Deployment Tool to create an installation package for the Host to get your list of machines populated. Please review our [Deployment Tool Walk-Through Video](#) for details on this process or call us for a complimentary one-on-one setup call to ensure you’re off to a great start with the proper settings that match your use cases.