

DE-COUPLING PROXY PRO RAS SERVER COMPONENTS

The scope of this document will cover the steps to install the PROXY Pro RAS server components across multiple machines with SQL running on one machine, the Gateway component running on the second and the Proxy Web Console (WC) + Proxy Identity Manager (PIM) components running on a third. Each server needs its own respective DNS alias and it should be noted that Hosts should be configured to report to the address of the Gateway server. Below you'll find guidance on how to prepare for this configuration broken down into four steps.

- Step 1 of 4 (Page 1): Preparing the servers
- Step 2 of 4 (Page 2): Preparing the server database
- Step 3 of 4 (Page 5): Installing the PROXY Pro Gateway component
- Step 4 of 4 (Page 9): Installing the PROXY Pro Web Console + PIM components

PROXY PRO GATEWAY AND WEB CONSOLE+PIM SERVER PRE-REQUISITES

- A fully-patched Windows Server 2016/2019/2022 to run the PROXY Pro Gateway component
 - Create a DNS alias for the server to run the Gateway component (i.e. gateway.domain.com)
 - A trusted certificate to validate its identity (i.e. gateway.domain.com)
 - This would be the address that Hosts would reach the server on, on the WSS protocol over port 443
- A fully-patched Windows Server 2016/2019 to run the PROXY Pro Web Console + Proxy Identity Manager components
 - Create a DNS alias for the server to run the Proxy Web Console component (i.e. support.domain.com)
 - A trusted certificate to validate its identity (i.e. support.domain.com)
 - This would be the address of the PROXY Pro Web Console landing page (<https://support.domain.com>)

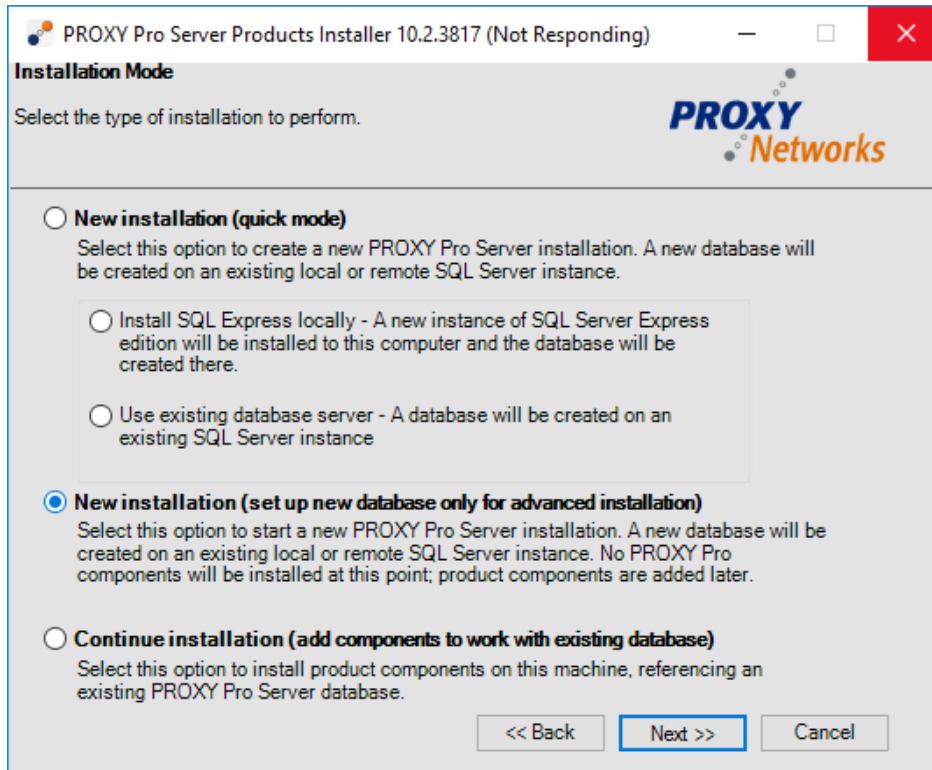
STEP 1 OF 4: PREPARING THE SERVERS

Install a trusted certificate on each of the servers. Each server (Gateway, Web Console+PIM, SQL server) requires their own FQDN and a trusted certificate to validate their identities. The certificates must reside within both the Personal and Trusted Root Certification Authorities stores.

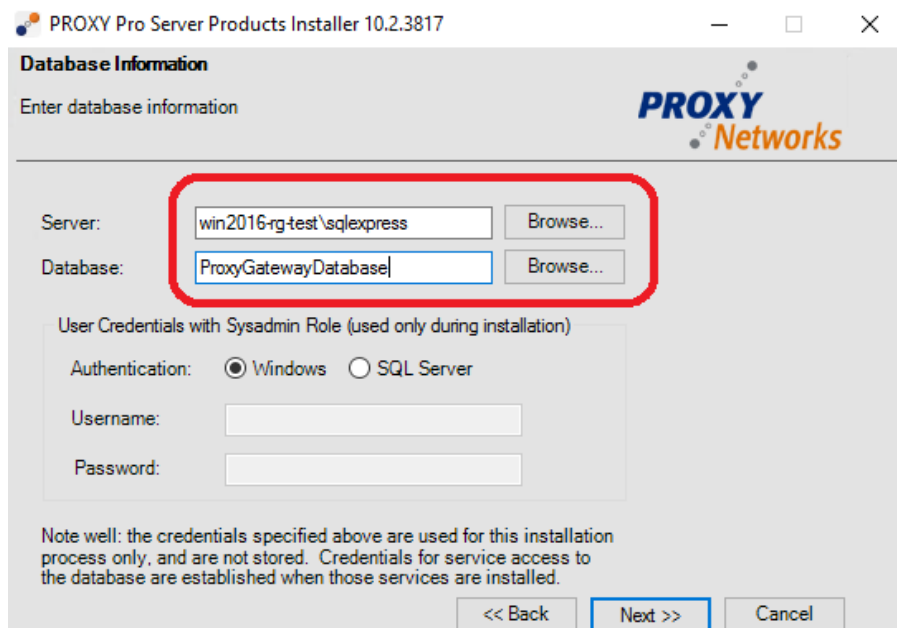
- a. If a trusted certificate is not an option, you can use a self-signed certificate generated with the `ServerCertificateWizard.exe` tool, found within the same directory as the `PROXYProServerProducts.exe` installer.
- b. Run **ServerCertificateWizard.exe** tool to create a self-signed certificate using the same name.
- c. Open MMC, find the certificate from the "Personal" store, right-click and choose Export. Export the certificate with the private key, give it a password when prompted and save the file to the desktop. Copy this file to the other machines, install it to both the Personal and Trusted Root Certification Authorities stores.

STEP 2 OF 4: PREPARING THE SERVER DATABASE

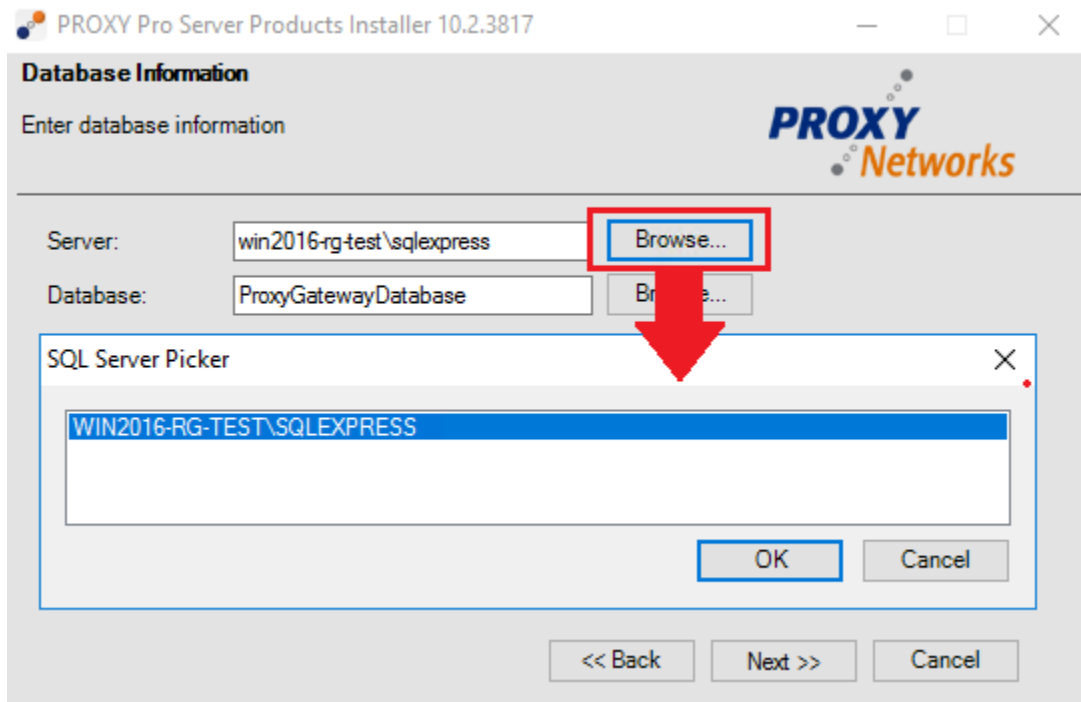
- 1) On the machine to be the Gateway server, run **PROXYProServerProducts.exe**.
- 2) Select the radio button for **New Installation (set up new database only for advanced installation)**. With this selection, a new database will be created on SQL instance of your choice including SQL servers within the network.



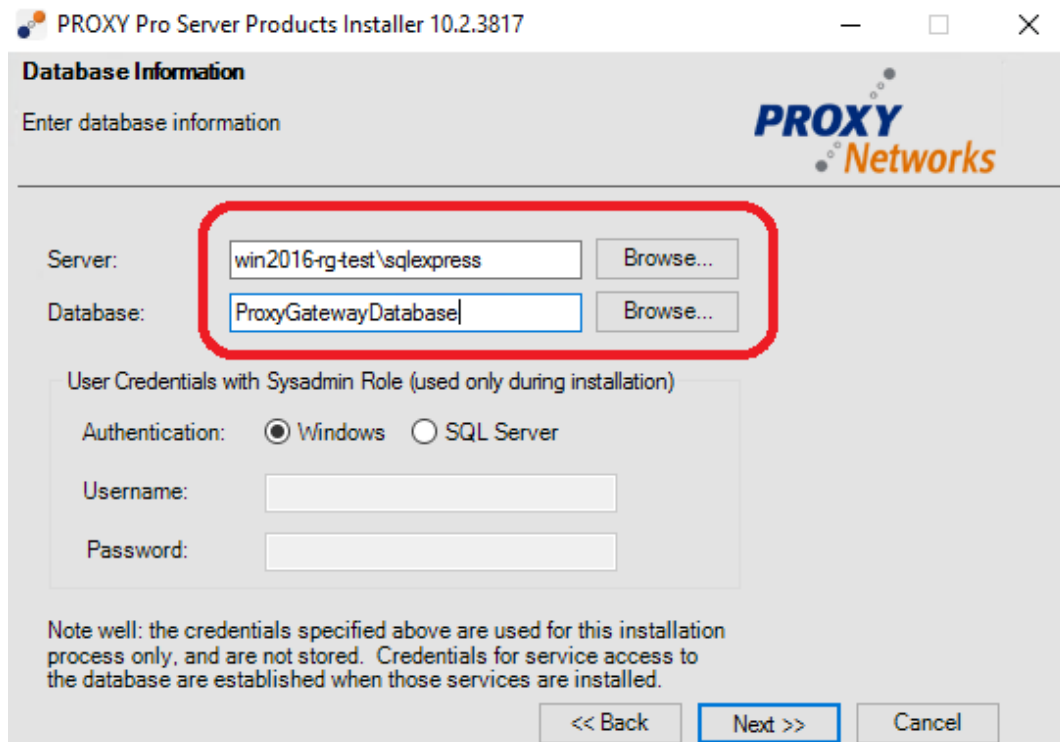
- 3) Click **Next** to specify a local or remote SQL Server instance.



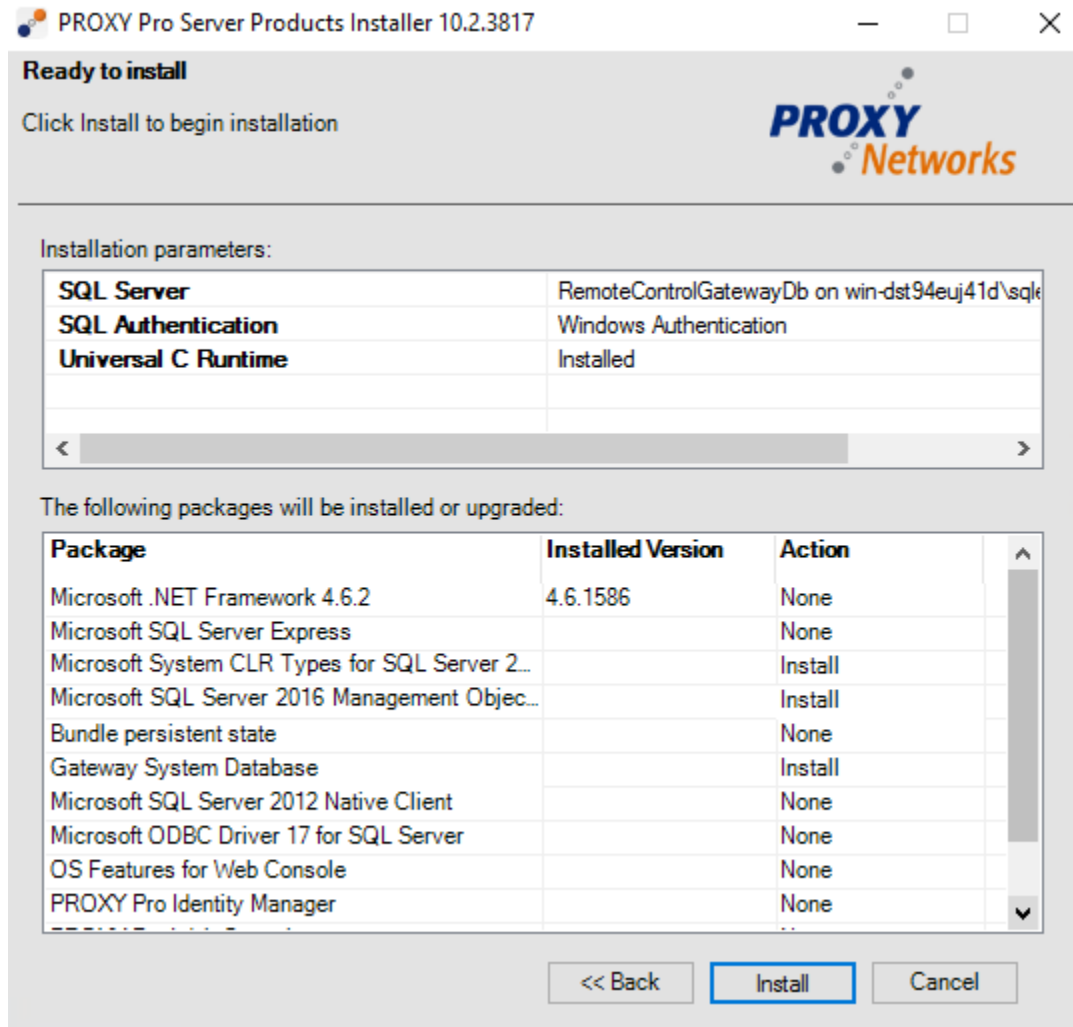
- a. Optionally, click the “Browse...” button to choose from available SQL Server instances within the network.



- 4) Use the **Authentication** radio button to select which authenticate mode should be used to authenticate to your SQL Server instance. Enter a user that is of the Sysadmin Role and click **Next** to continue.



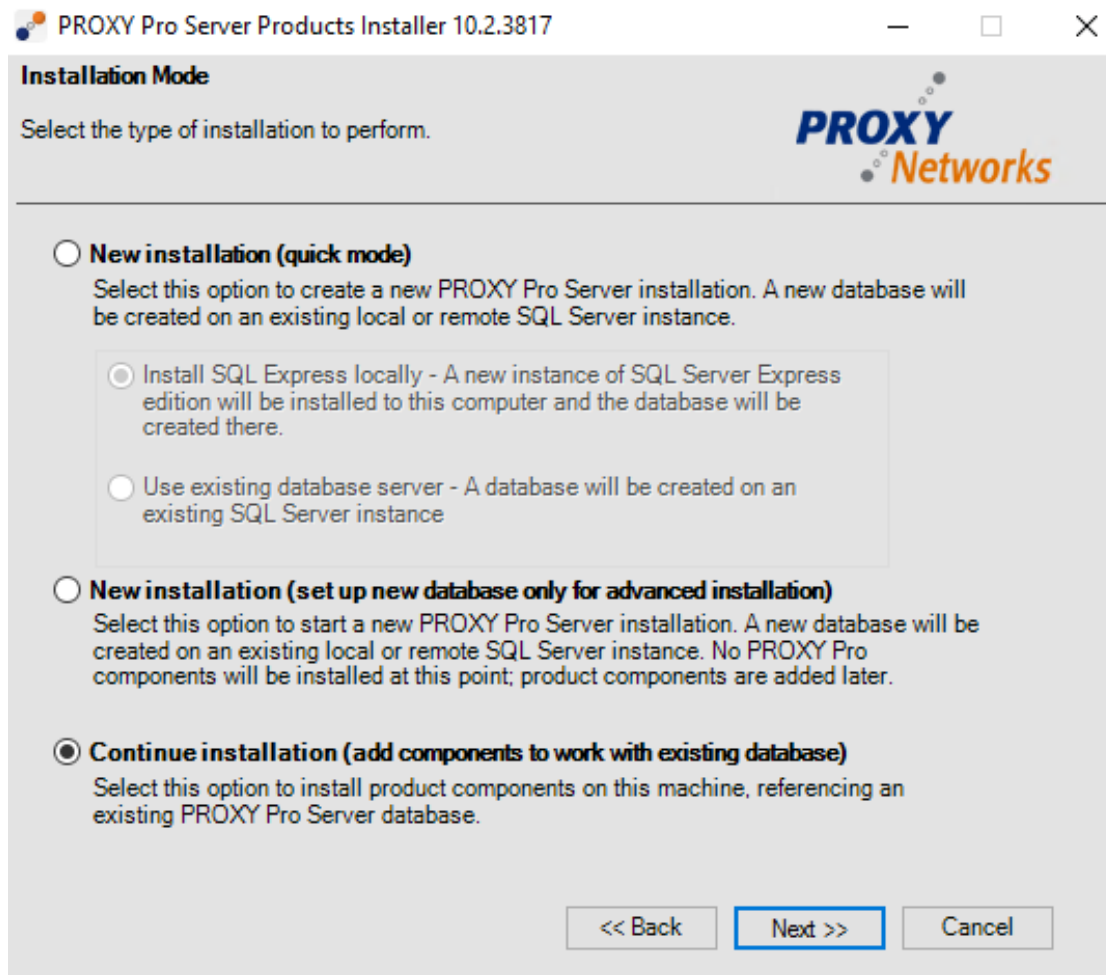
- 5) A list of packages to be installed will be presented. A couple other pre-requisites such as Microsoft System CLR Types for SQL Server 201X and Microsoft SQL Server 201X Management Objects. Click **Install** to create the Gateway system database.



- 6) When the database creation process has completed successfully click **Close** to dismiss the installer.
- 7) Open the Windows Control Panel, visit Programs and Features, highlight PROXY Pro Server Products Bundle and click **Uninstall** to remove the bundle installer from the system.

STEP 3 OF 4: INSTALLING THE GATEWAY SERVER COMPONENT

- 1) After having uninstalled the bundle installer, run the bundle installer again (PROXYProServerProducts.exe).
- 2) Choose **Continue installation (add components to work with existing database)** and click **Next**.



- 3) Select the SQL Server instance and database specified in the previous section or use the **Browse...** button to select a SQL server instance from a list and click **Next**.

PROXY Pro Server Products Installer 10.2.3817

Database Information

Enter database information

Server: Browse...

Database: Browse...

User Credentials with Sysadmin Role (used only during installation)

Authentication: Windows SQL Server

Username:

Password:

Note well: the credentials specified above are used for this installation process only, and are not stored. Credentials for service access to the database are established when those services are installed.

<< Back **Next >>** Cancel

- 4) Use the radio buttons to set the Identity Manager and Web Console to **Leave Alone**. Set the radio button for **Install** for the Gateway line and click **Next**.

PROXY Pro Server Products Installer 10.2.3817

Installed Components

Select installation options

Database

SQL Instance: win2016-rg-test\sqlexpress
SQL Database: RemoteControlGatewayDb
Schema Version: 1003714

Identity Manager

Location: Not Installed
Version: Install Remove Leave Alone

Web Console

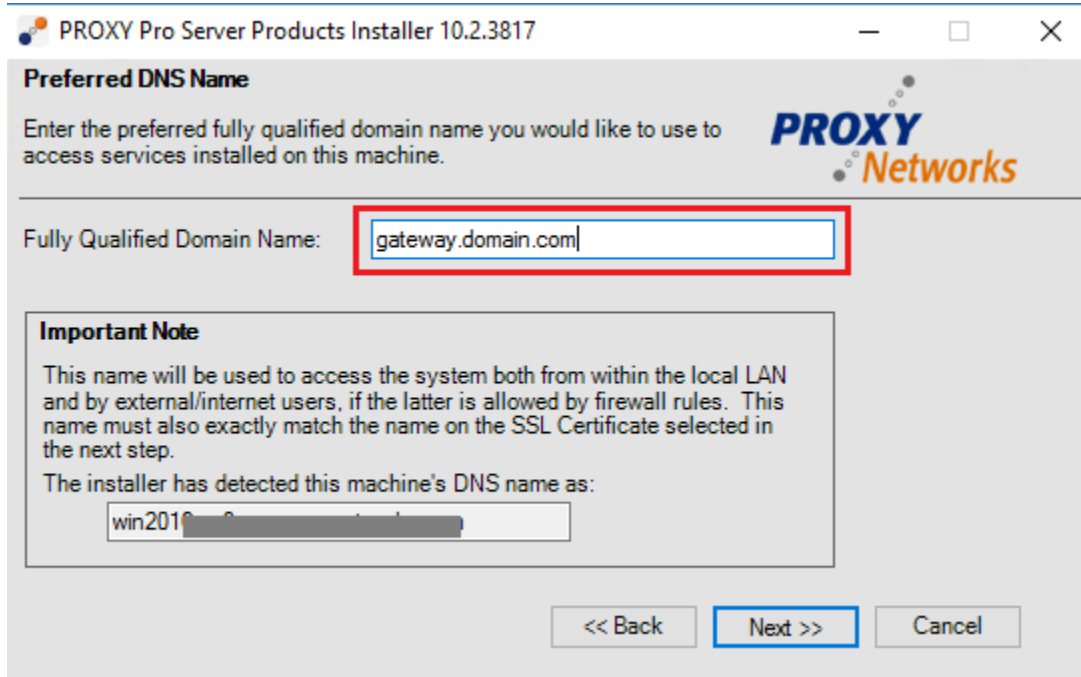
Location: Not Installed
Version: Install Remove Leave Alone

Gateway

Location: Not Installed
Version: Install Remove Leave Alone

<< Back **Next >>** Cancel

- 5) Accept the EULA by clicking the checkbox and clicking **Next**.
- 6) When prompted for the Fully Qualified Domain Name, enter an appropriate value (i.e. gateway.domain.com). Note that this name must be different to the Web Console server's address.



PROXY Pro Server Products Installer 10.2.3817

Preferred DNS Name

Enter the preferred fully qualified domain name you would like to use to access services installed on this machine.

Fully Qualified Domain Name:

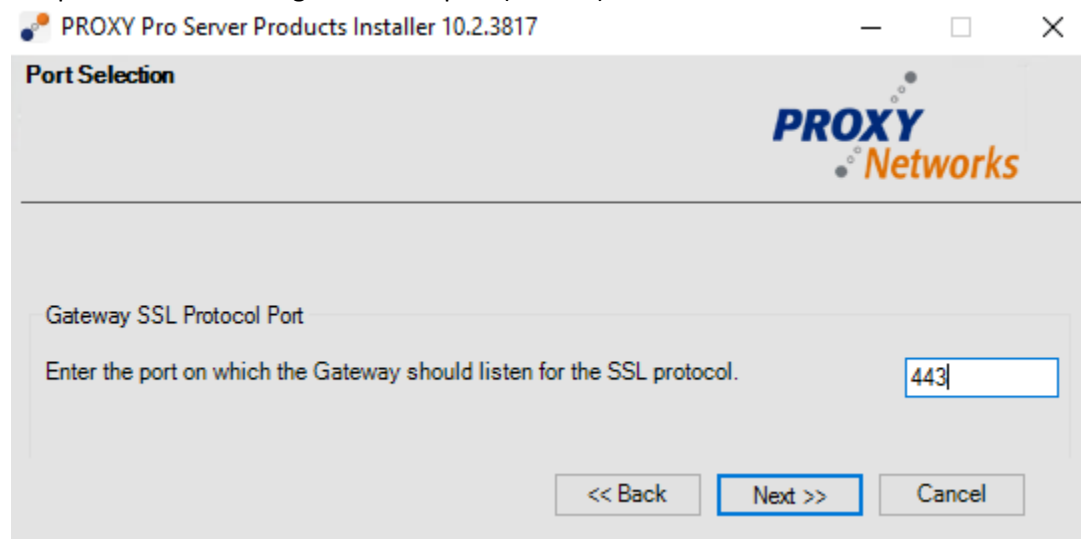
Important Note

This name will be used to access the system both from within the local LAN and by external/internet users, if the latter is allowed by firewall rules. This name must also exactly match the name on the SSL Certificate selected in the next step.

The installer has detected this machine's DNS name as:

<< Back Next >> Cancel

- 7) Accept the default port number or assign a custom port (i.e. 443) and click **Next**.



PROXY Pro Server Products Installer 10.2.3817

Port Selection

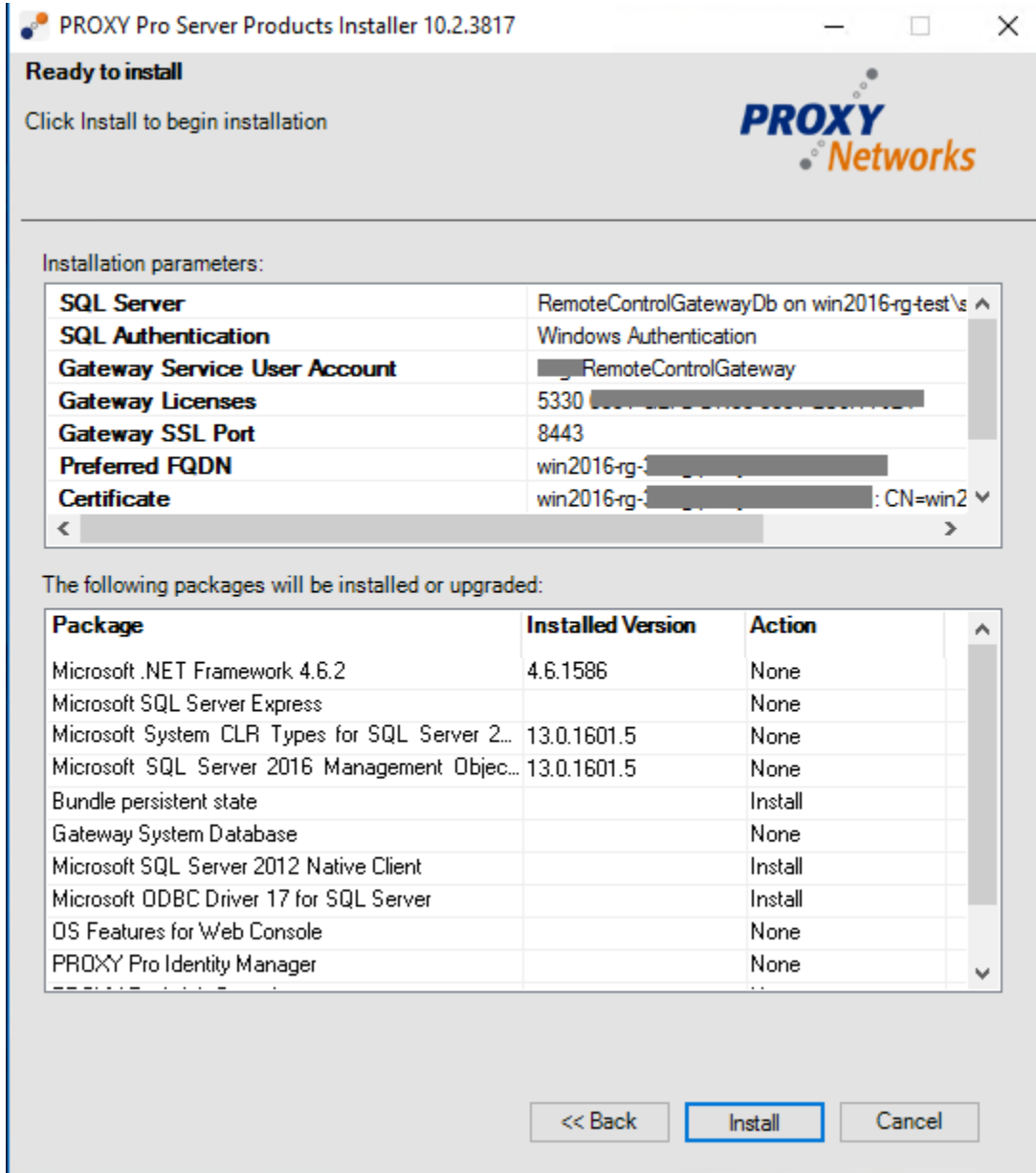
Gateway SSL Protocol Port

Enter the port on which the Gateway should listen for the SSL protocol.

<< Back Next >> Cancel

- 8) Choose a trusted certificate from a list of available installed certificates and click **Next**.
- 9) When prompted to create a service account by the name of DOMAIN\RemoteControlGateway, supply a password, or adjust the default account name to meet service account formatting policies at your company. Please note that the service account name cannot be changed later. Click **Next**.
- 10) Enter your PROXY Pro RAS Server license key into the field and click **Next**.

11) A list of items will be listed showing what will be installed. Click **Install** to begin.

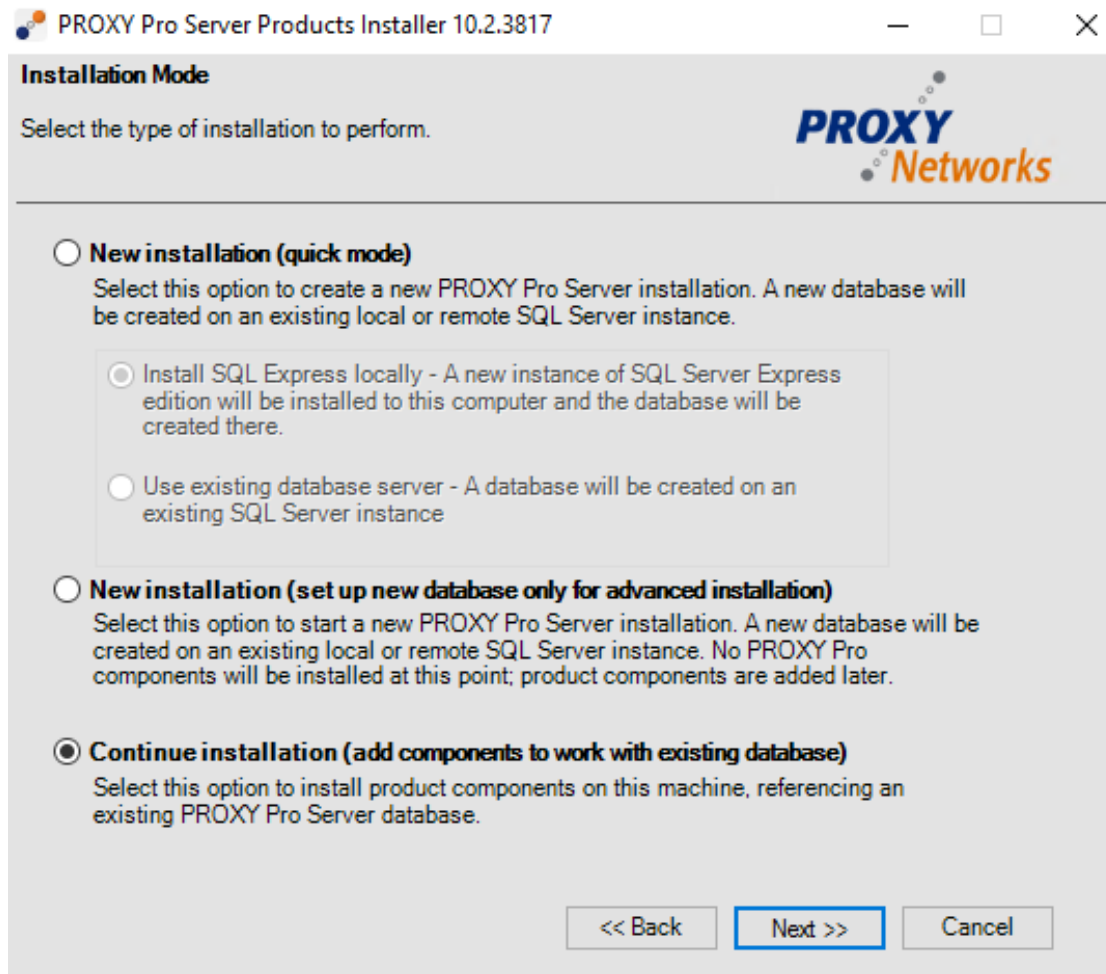


12) When the installation finishes, click the **Close** button and reboot if prompted.

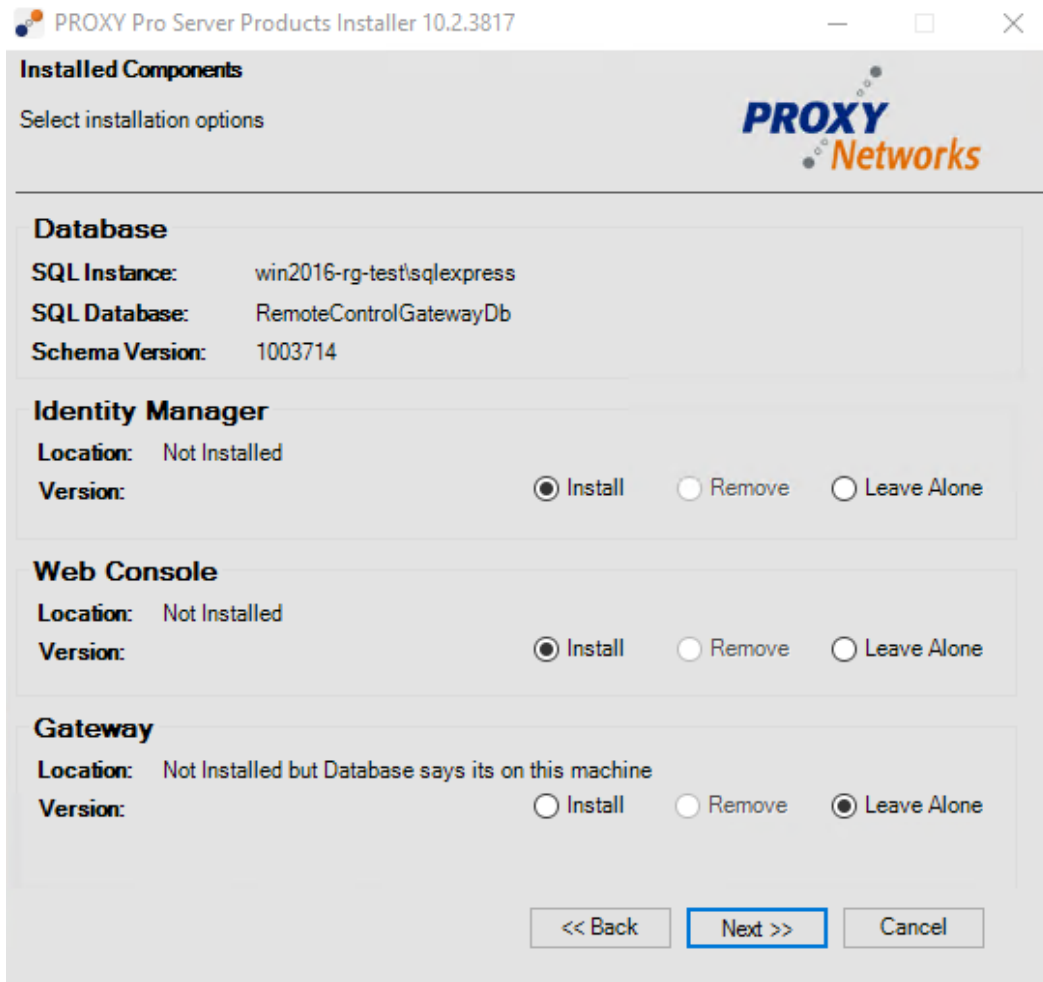
At this point the PROXY Pro Gateway component has been installed and we're finished working with this server. We'll now move to the server used as the Proxy Web Console and Proxy Identity Manager (PIM).

STEP 4 OF 4: INSTALLING THE PROXY WEB CONSOLE + PIM COMPONENTS

- 1) Run PROXYProServerProducts.exe and select **Continue Installation (add components to work with existing database)**.

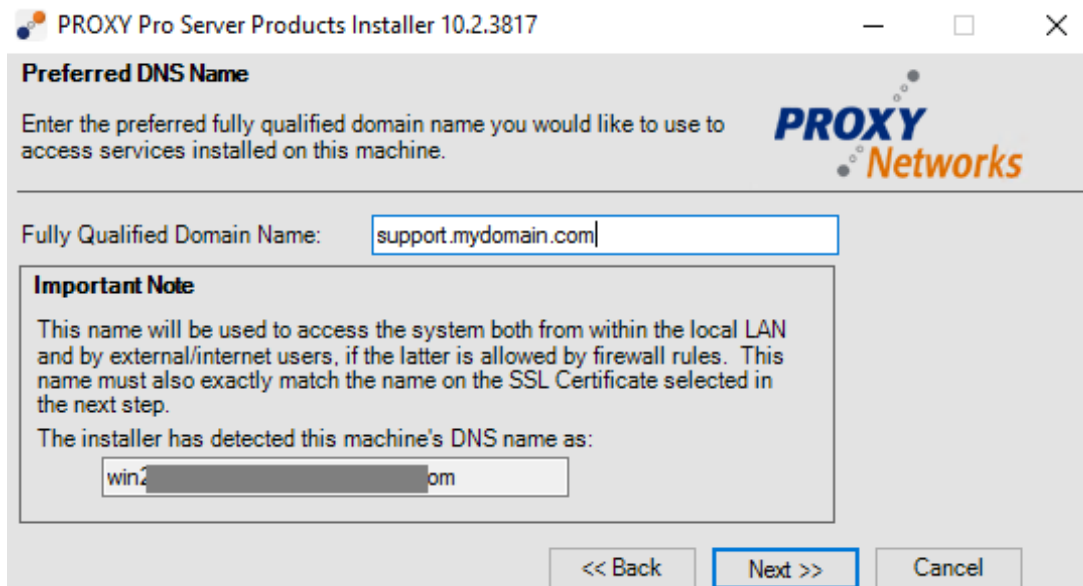


- 2) Select the SQL Server instance and database chosen in the previous section or use the **Browse...** button to select a SQL server instance from a list and click **Next**.
- 3) Use the radio buttons to set the Gateway to **Leave Alone** and set the Web Console and Identity Manager radio buttons to **Install**. Click **Next** to begin.

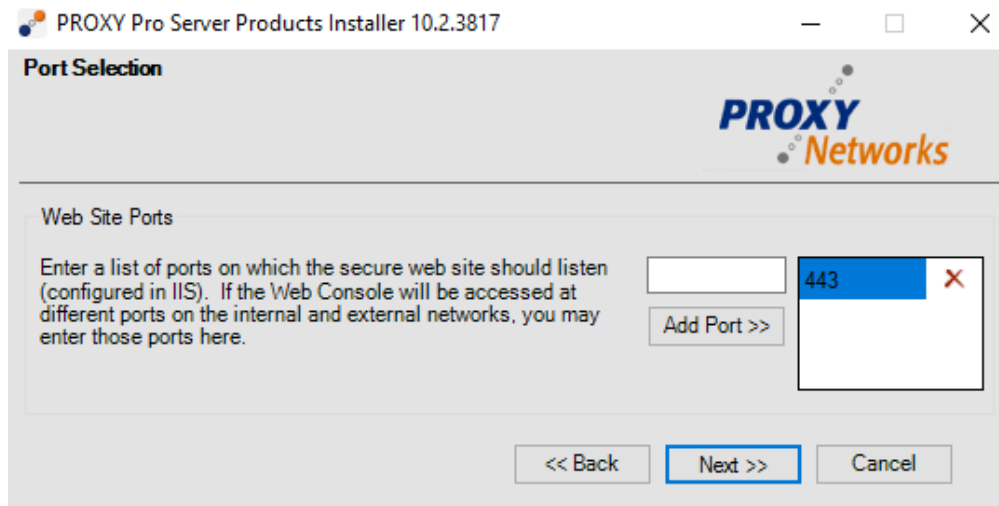


4) Accept the EULA by clicking the checkbox then click **Next**.

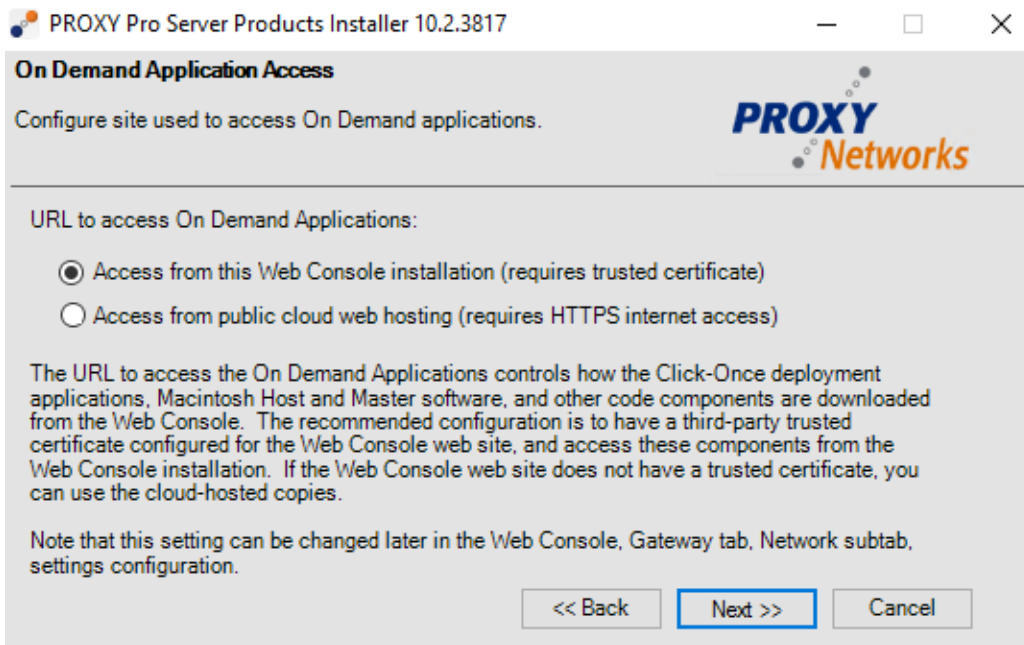
5) When prompted for the Fully Qualified Domain Name, enter an appropriate value (i.e. support.domain.com).



6) Accept the default port number (443) or supply your own and click **Next**.



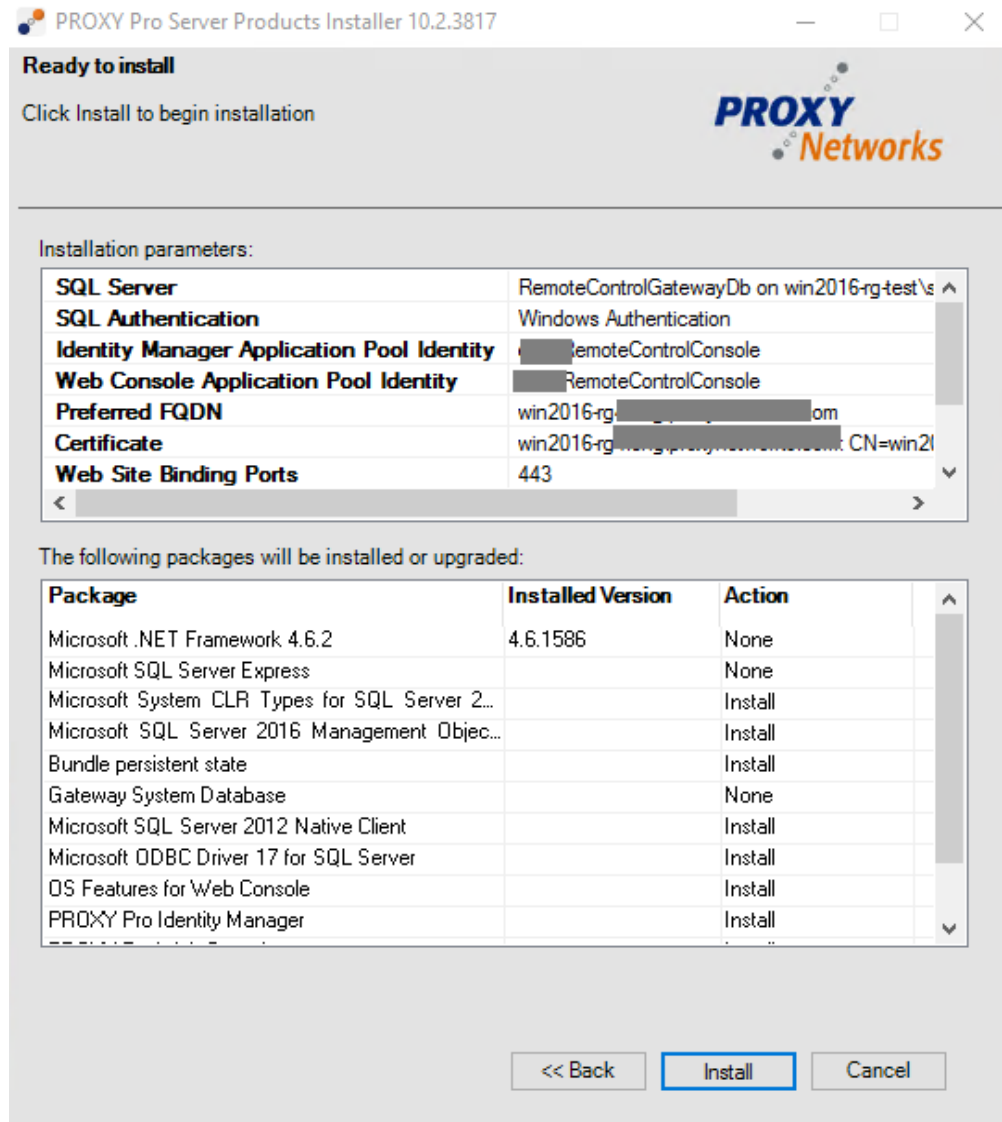
- 7) Select the trusted certificate that the Gateway machine should be presenting from the list. If you have pre-installed a certificate before starting it should be listed. Select it and click **Next**.
- 8) When prompted to choose between two radio buttons for the URL to access On Demand Applications, choose the top radio button, assuming a trusted certificate is provided.
- a. The first radio button is the correct choice when using trusted certificates.
 - b. The second radio button is the correct choice only when using self-signed certificates that have been placed into the proper stores on the other machines involved (Personal, Trusted Root Certification Authority).



9) When prompted to create a service account for the Proxy Identity Manager (default name is DOMAIN\RemoteControlConsole) supply a password or adjust the default account to match service account formatting practices at your company. The service account name cannot be changed later.

10) When prompted to create a service account for the Web Console (default name is DOMAIN\RemoteControlConsole), supply a password or adjust the default account to match service account formatting practices at your company. The service account name cannot be changed later.

11) The following list of items will be installed:



12) Click the **Install** button and the installation will begin.

13) When the installation finishes, click the **Close** button and reboot if prompted.

DE-COUPLING COMPLETE!

Let's confirm that the installation was a success. Please open a web browser and input your Proxy Web Console server's address into the URL bar (i.e <https://support.mydomain.com>). Click the "Find a Desktop" button to log into your Proxy Web Console then click a Host to verify that you can connect successfully. Please reach out to support@proxynetworks.com for help or questions on achieving this setup.