

## PROXY PRO RAS ULTRA QUICK START GUIDE: GETTING STARTED

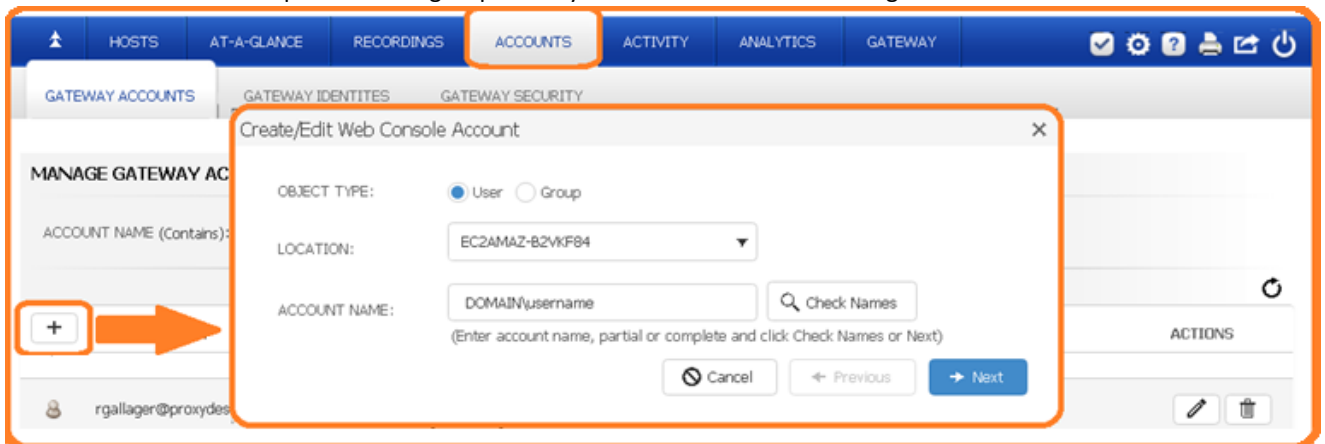
- Windows Server 2016, 2019 or 2022 (VM is perfect) with at minimum, 2 CPU, 4 GB memory, 50gb HDD space
- Generate a DNS alias for the server and install a matching certificate (i.e. support.acme.com or a wildcard like \*.yourwebsite.com)
- Port forward 443 to the server to use PROXY Pro RAS externally

### DOWNLOADING AND INSTALLING PROXY PRO RAS

- 1) Download the PROXY Pro RAS Edition software zip file from [products.proxynetworks.com/downloads](https://products.proxynetworks.com/downloads) and extract.
- 2) Install **PROXYProServerProducts.exe** from within the PROXYProServer folder to begin.
- 3) The installer will download and install SQL Express by default; hit **Next** or specify an existing SQL Server instance then click **Next**.
  - a. Enter the web address that you want your PROXY Pro Web Console to be accessible at and click **Next**.
  - b. Equip the server with a certificate by choosing from a list of installed certificates and click **Next**.
  - c. The installer will ask you to create two service accounts (DOMAIN\RemoteControlConsole and DOMAIN\RemoteControlGateway). The installer will create accounts; supply a password for each and hit **Next** -> **Finish**.

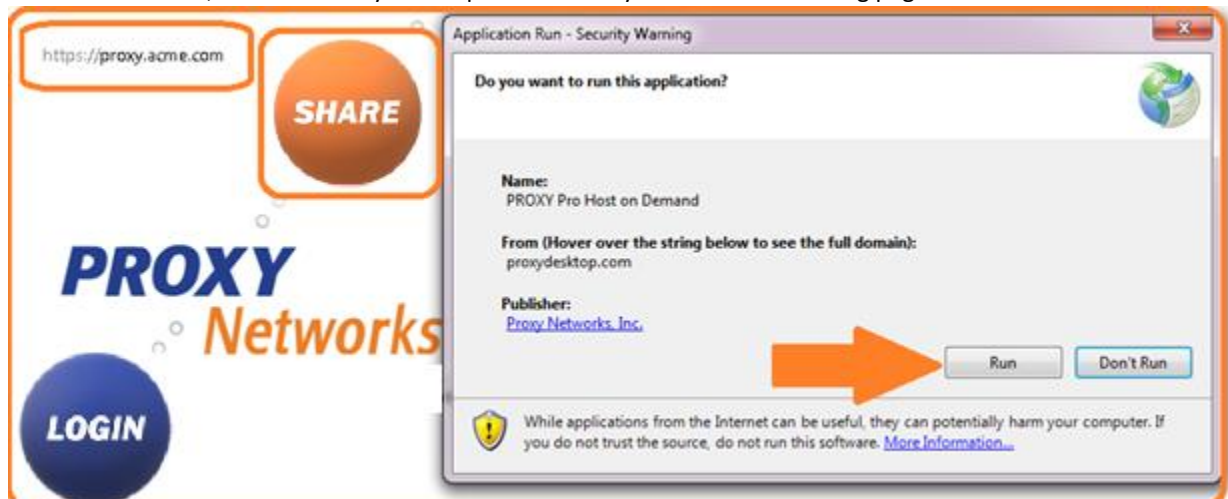
### FIRST TIME LOGIN & ADDING TECHNICIANS

- 1) Visit your web console address using the one specified in step **3a**, log in using the local administrator account.
- 2) Use the “**Accounts**” tab to import users or groups from your domain who will be using PROXY Pro.

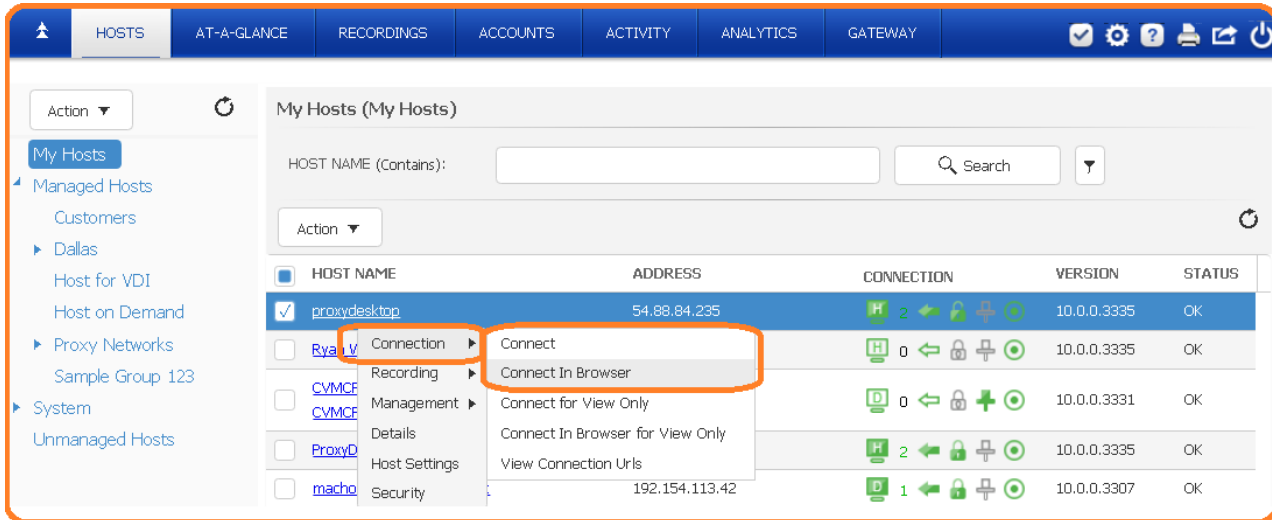


### SHARING A DESKTOP & CONNECTING TO IT

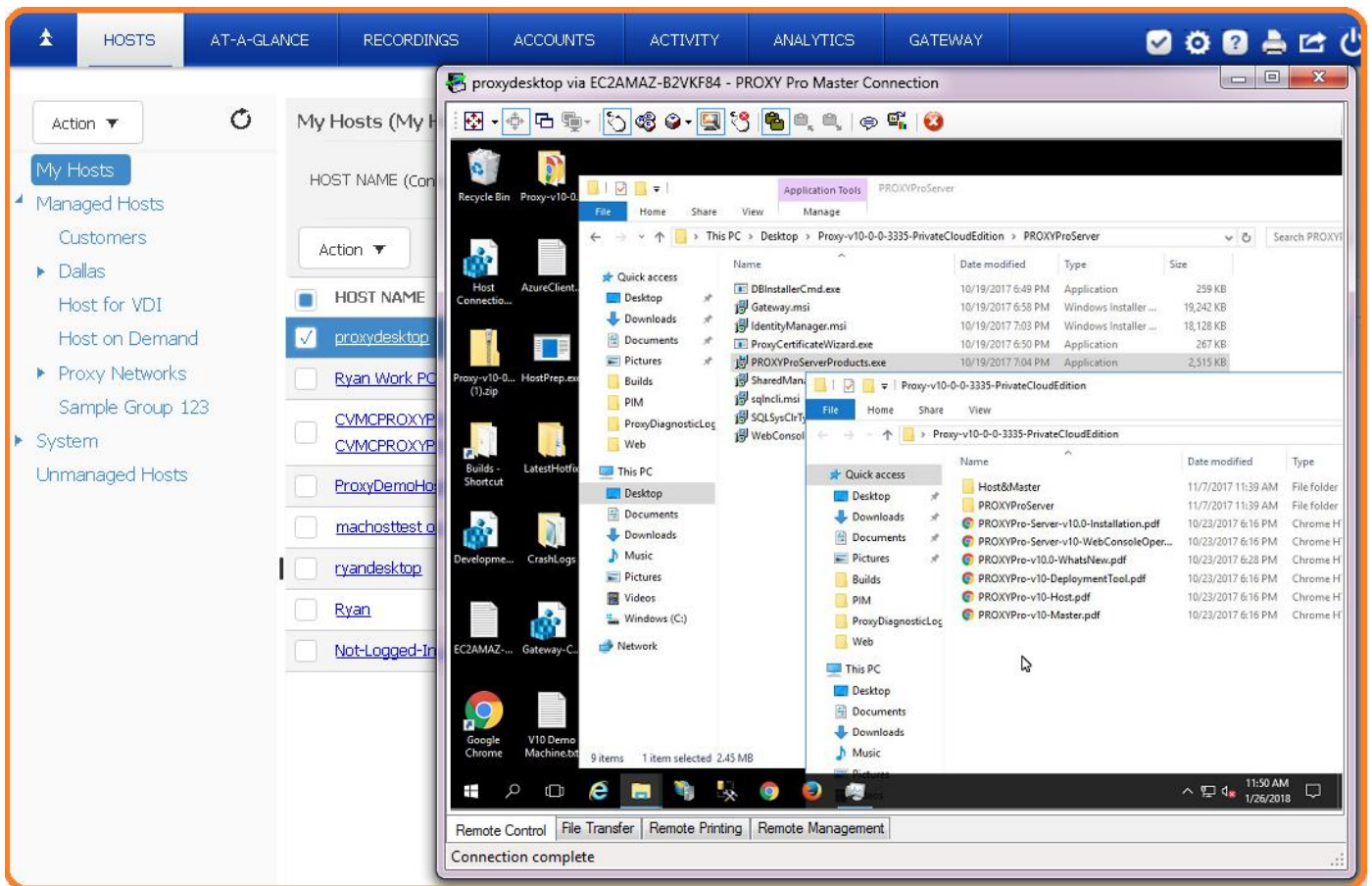
1. Launch the Host on Demand, click “Share my Desktop” on the Proxy Web Console landing page.



2. All endpoints are in “My Hosts”; endpoints running the Host on Demand instances are in the Host on Demand group.



3. Click to connect!



**Great!** Now that the server-side software is installed, you can use the PROXY Pro Deployment Tool to create an installation package for the Host to get your list of machines populated. Please review our [Deployment Tool Walk-Through Video](#) for details on this process or call us at 617 453 2700 for a complimentary one-on-one setup call to ensure you’re off to a great start with the proper settings that match your use cases.